

WAX MUSEUM CONDOS  
917 CONTI STREET  
NEW ORLEANS, LA.

THESE PLANS AND SPECIFICATIONS HAVE BEEN PREPARED BY ME OR UNDER MY CLOSE PERSONAL SUPERVISION AND TO THE BEST OF MY KNOWLEDGE AND BELIEF THEY COMPLY WITH ALL CITY, STATE AND FEDERAL REQUIREMENTS, AND I AM NOT PROVIDING CONTRACT ADMINISTRATION.

CERTIFIED CORRECT

THIS DRAWING IS CONFIDENTIAL AND NOT BE LOANED, REPRODUCED, COPIED, EITHER WHOLLY OR IN PART, OR MADE PUBLIC IN ANY MANNER WITHOUT THE WRITTEN CONSENT OF HBSA II ARCHITECTS. A PROFESSIONAL L.L.C. ALL RIGHTS OF DESIGN OR INVENTION ARE RESERVED AND WILL REMAIN THE SOLE PROPERTY OF HBSA II ARCHITECTS A PROFESSIONAL L.L.C.

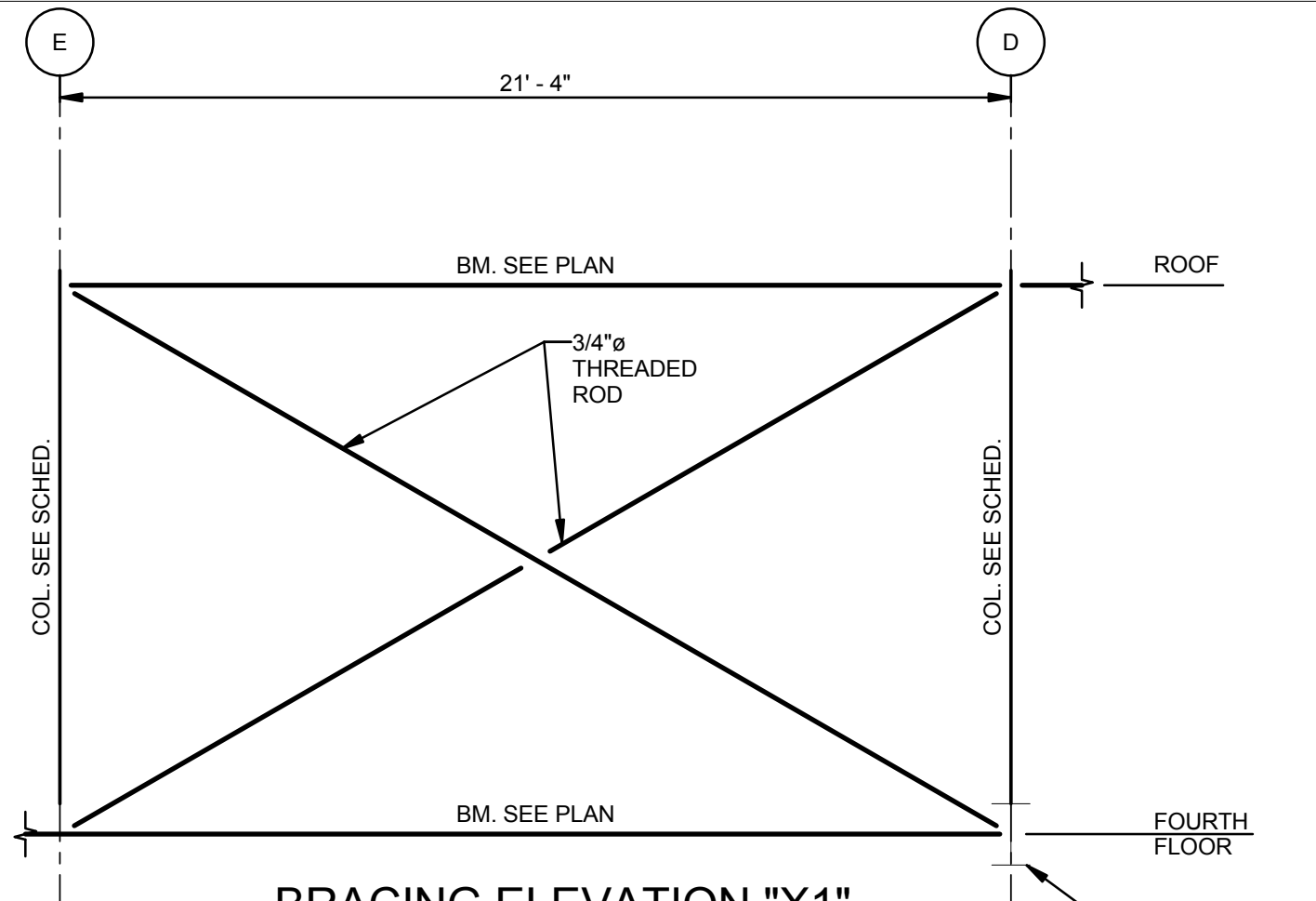
REVISION HISTORY					
NO.	DATE	DESCRIPTION	BY	CHKD	APP'D
1	06/20/16	SCHEMATIC DESIGN			
2	07/14/16	DESIGN DEVELOPMENT			
3	08/26/16	FOUNDATION PERMIT SET			
4	09/16/16	PROGRESS SET			
5	09/27/16	PERMIT SET			

BRACING ELEVATIONS

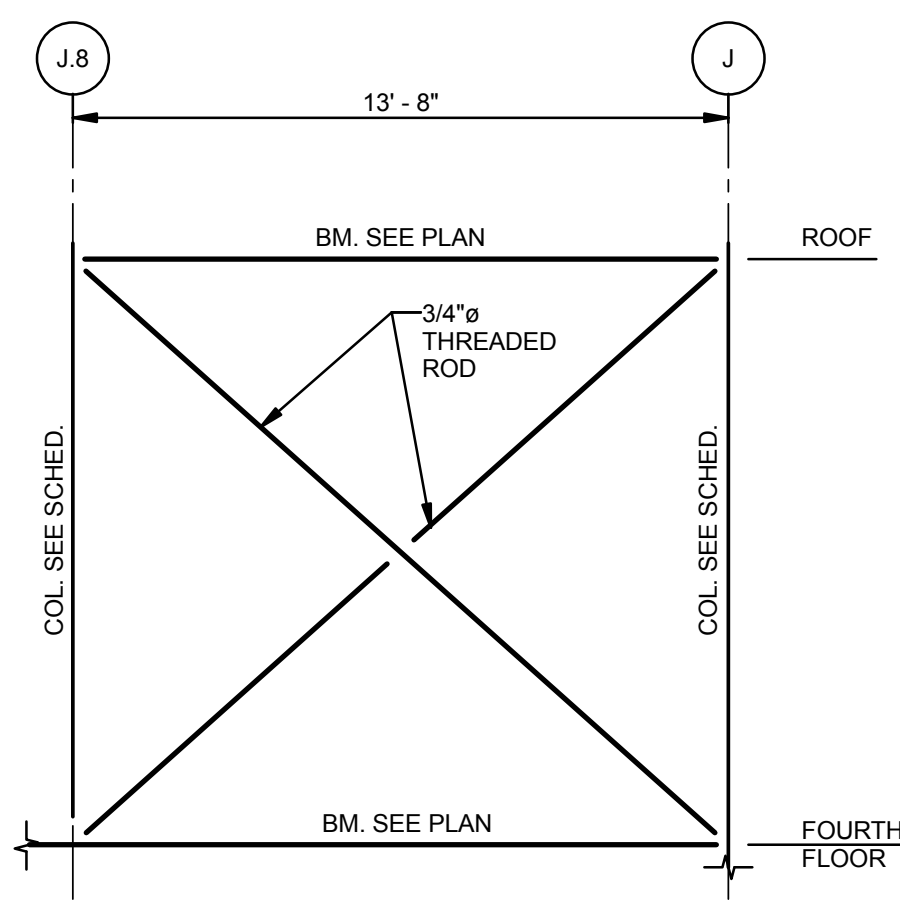
PROJECT#: 1435  
PHASE: DD  
DRAFTER: HSB  
CHECKER: HSB  
SCALE: AS NOTED  
ISSUED: 08-26-16

SHEET#:  
**S401**

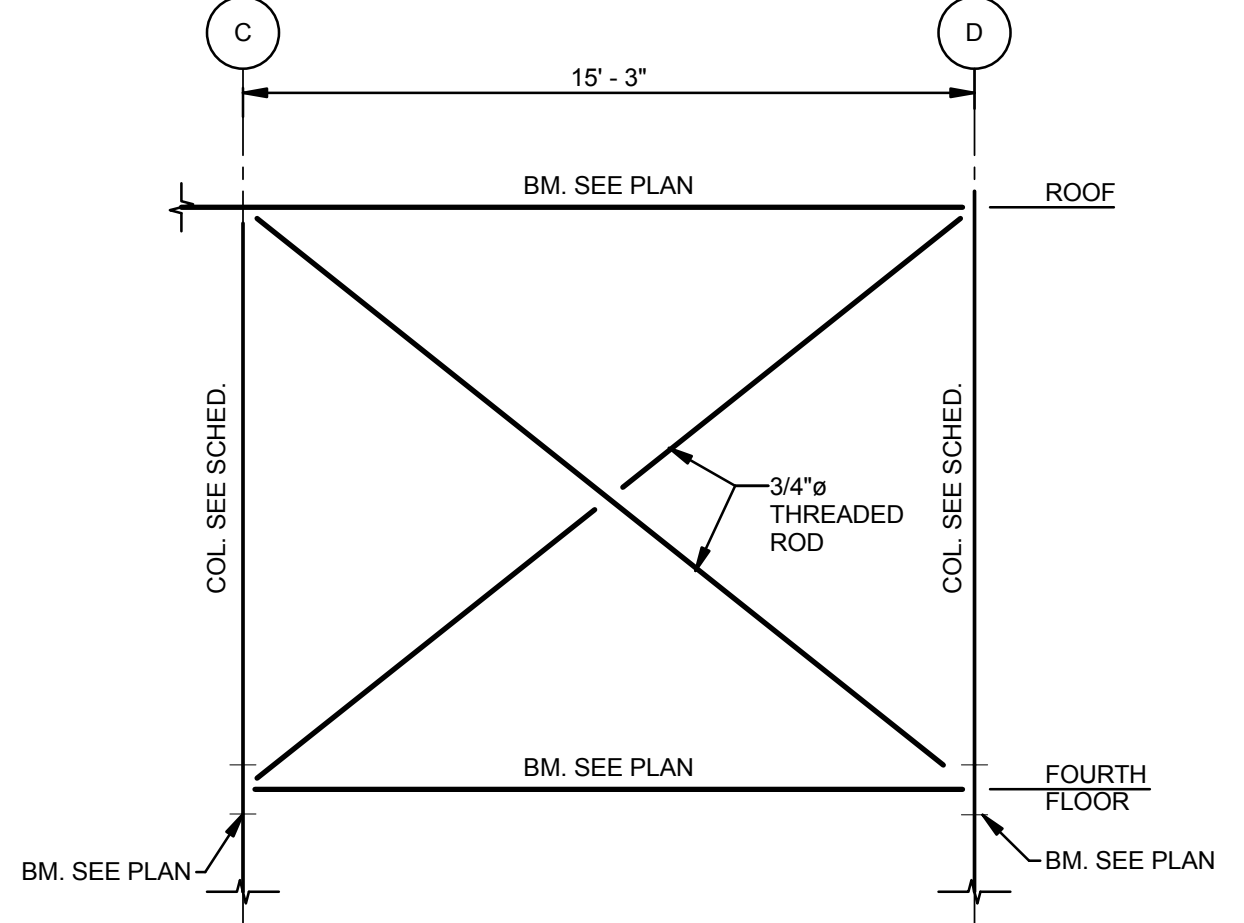
**MORPHY MAKOFSKY**  
INCORPORATED  
CONSULTING ENGINEERS  
(504)488-1317  
JOB NO. 15157



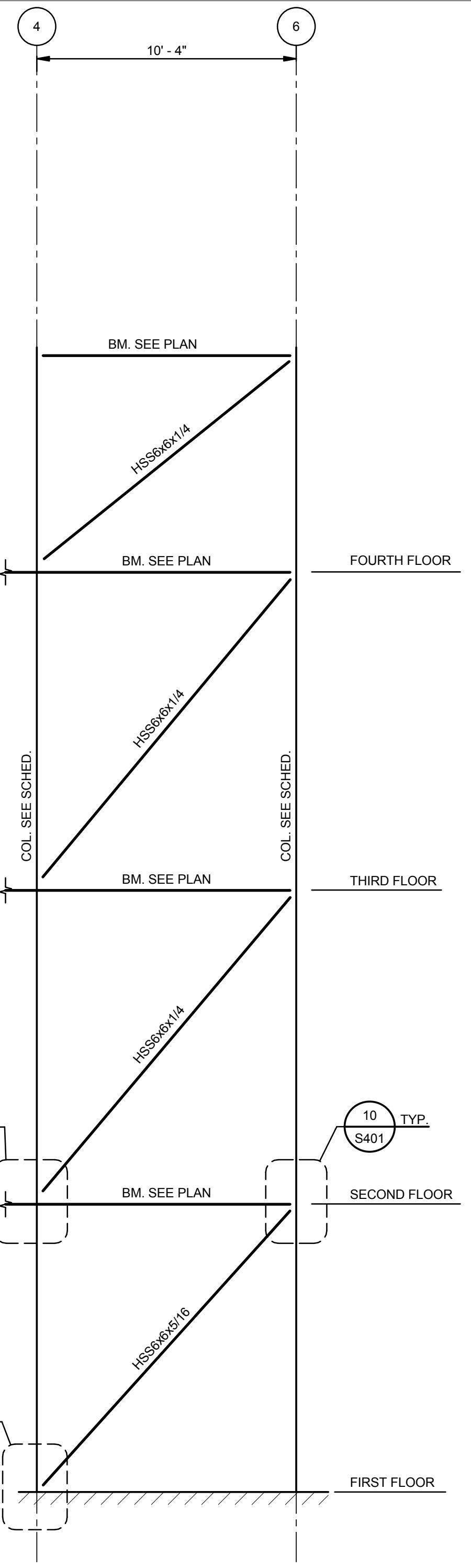
**BRACING ELEVATION "X1"**  
**ALONG COL. LINE 4**  
S401 1/4" = 1'-0"



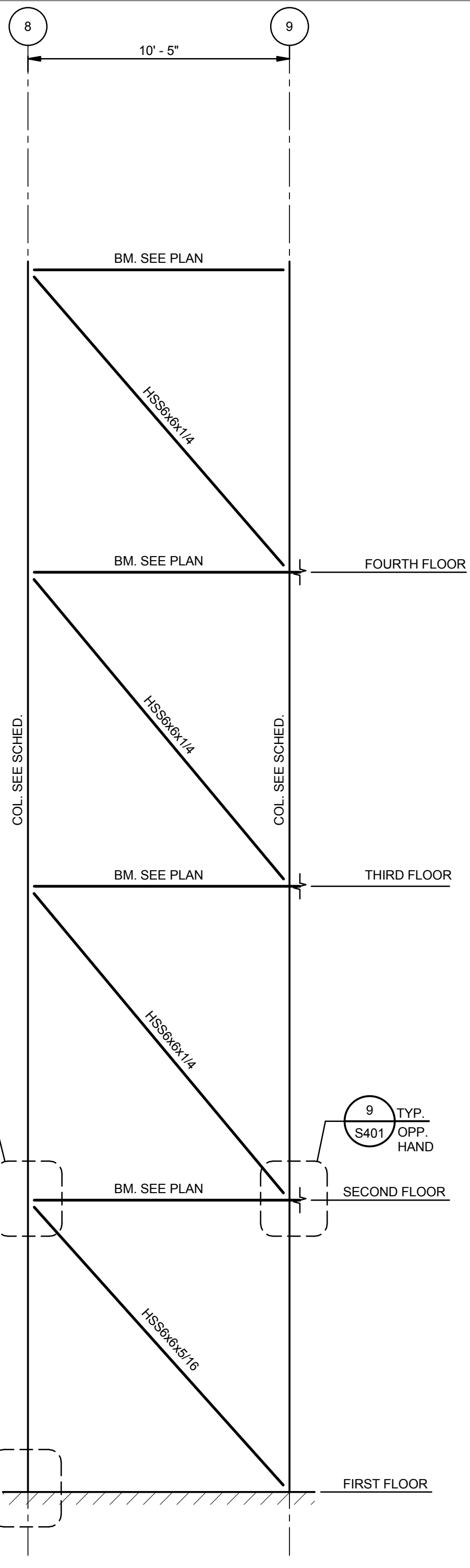
**BRACING ELEVATION "X2"**  
**ALONG COL. LINE 4 & 9**  
S401 1/4" = 1'-0"



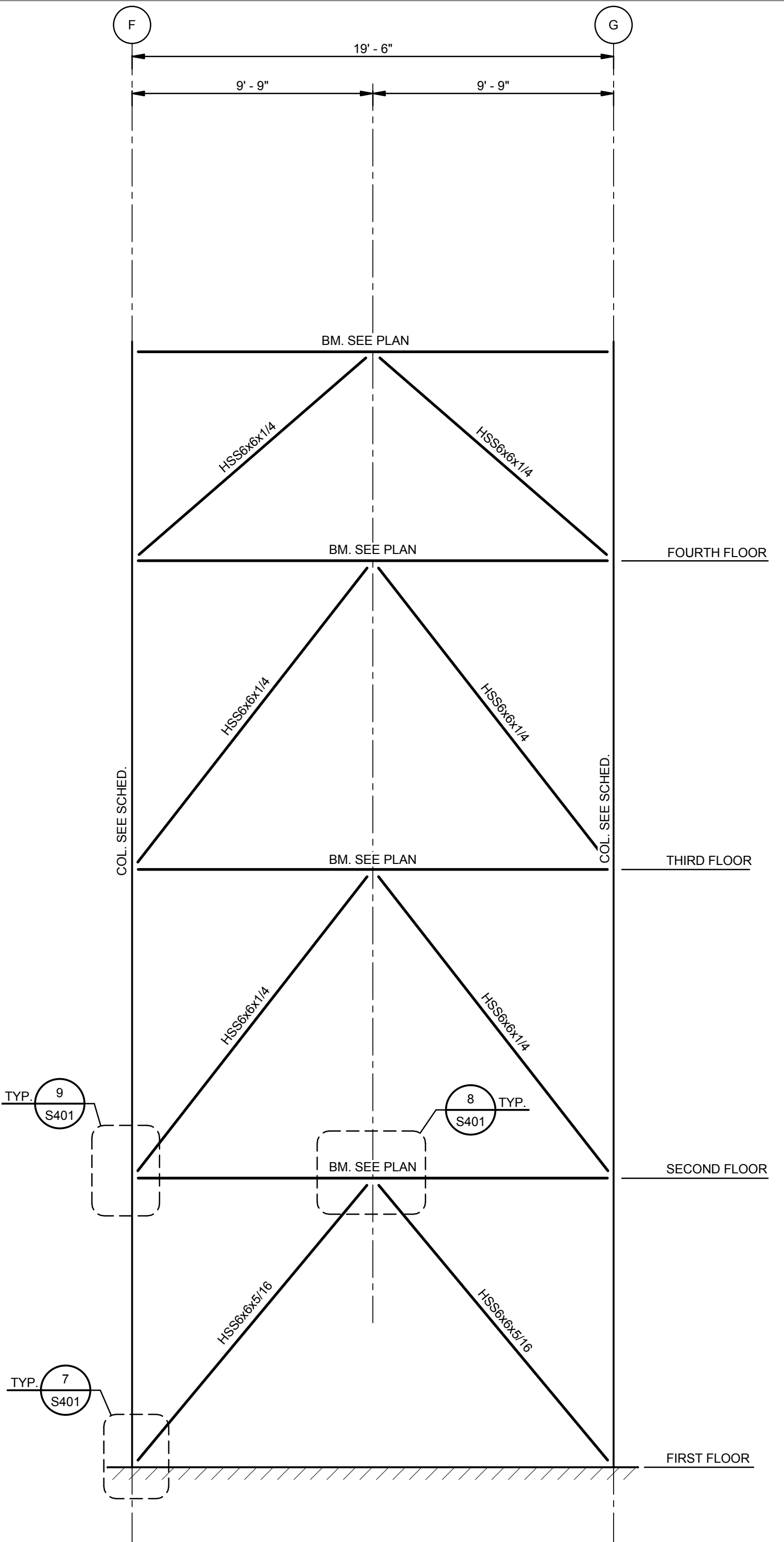
**BRACING ELEVATION "X3"**  
**ALONG COL. LINE 9**  
S401 1/4" = 1'-0"



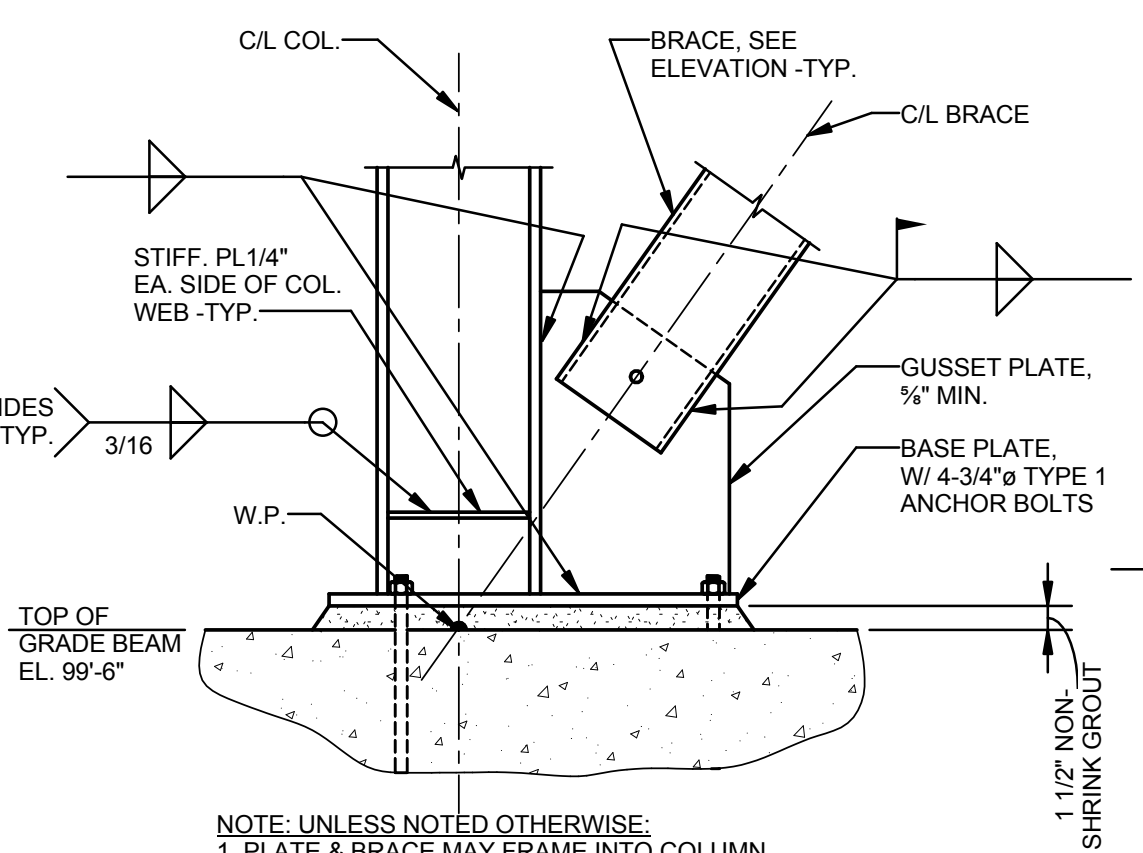
**BRACING ELEVATION "B2"**  
**ALONG COL. LINE F & G**  
S401 1/4" = 1'-0"



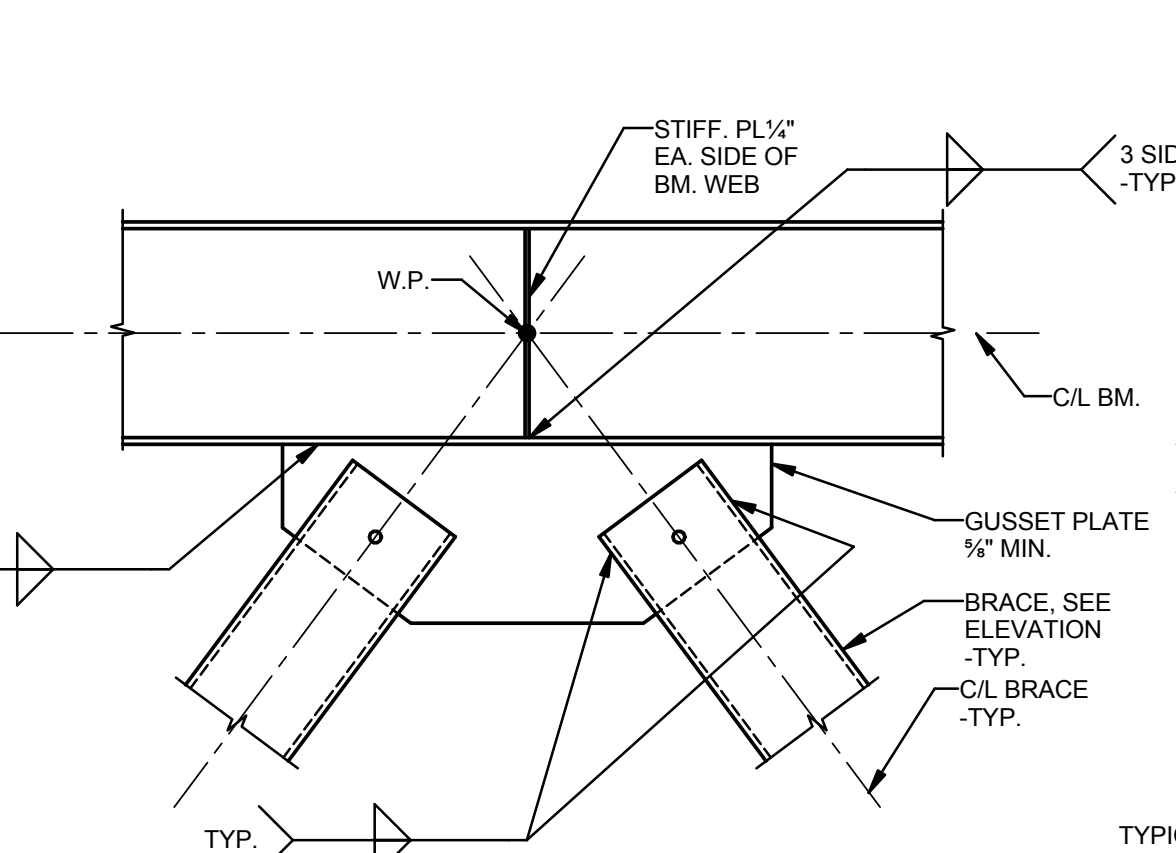
**BRACING ELEVATION "B3"**  
**ALONG COL. LINE F & G**  
S401 1/4" = 1'-0"



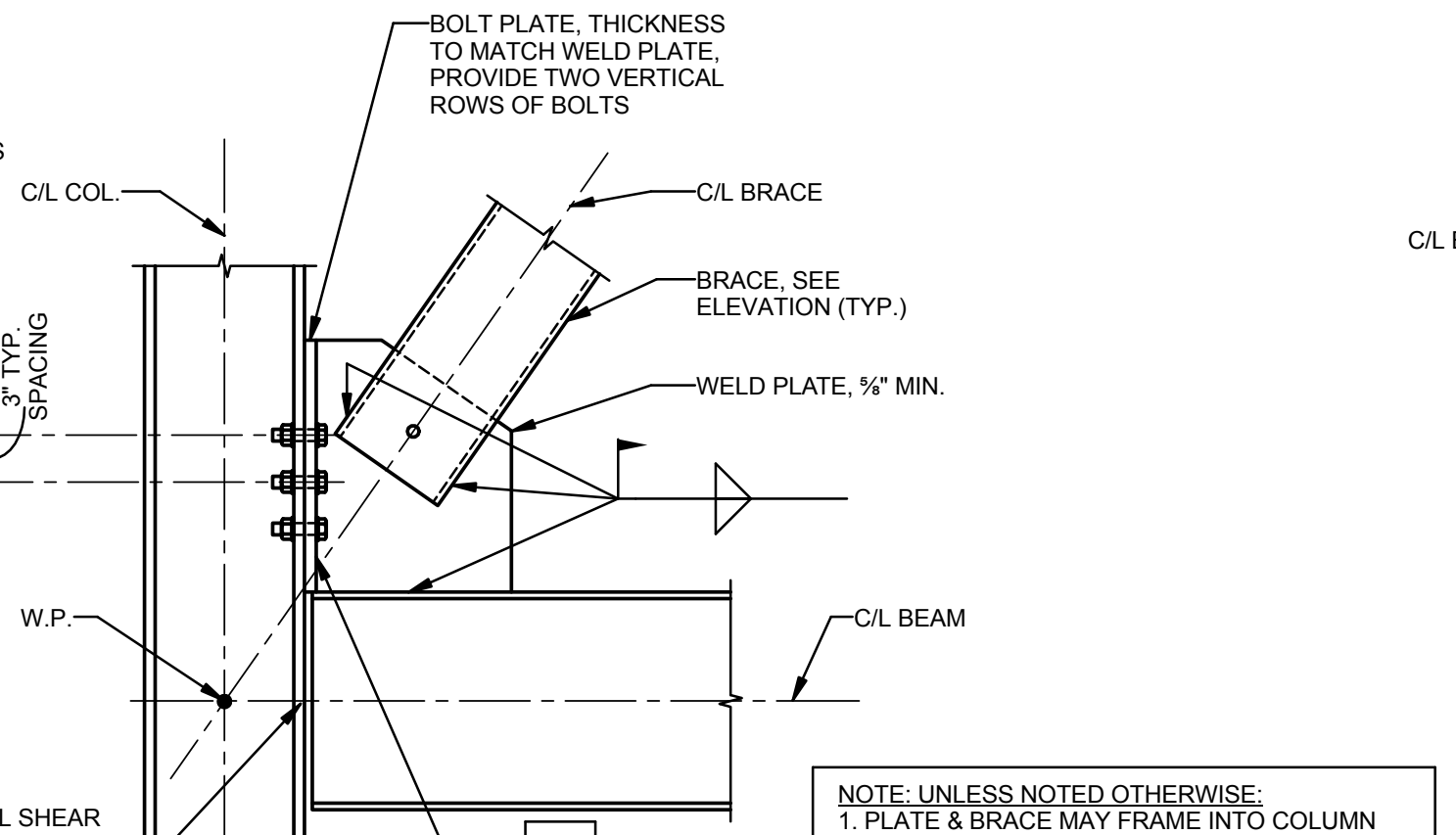
**BRACING ELEVATION "B1"**  
**ALONG COL. LINE 6 & 8**  
S401 1/4" = 1'-0"



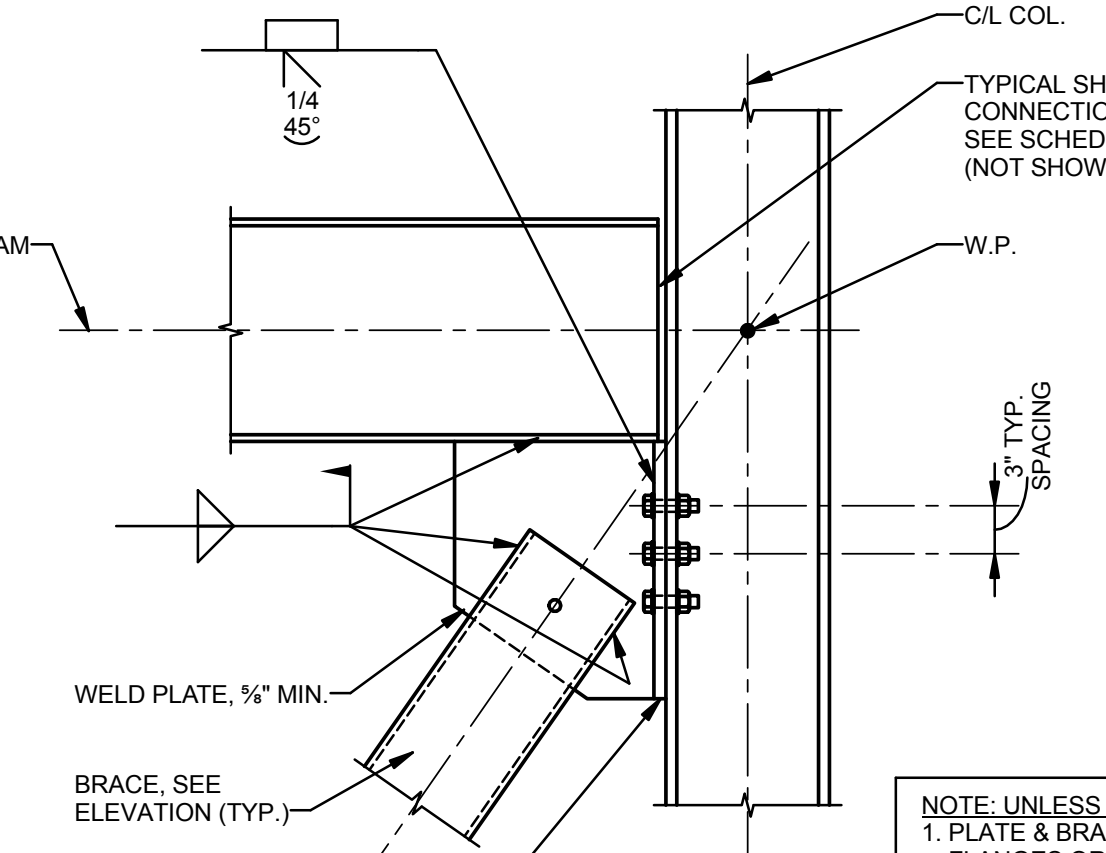
**DETAIL 7**  
S401 1" = 1'-0"



**DETAIL 8**  
S401 1" = 1'-0"



**DETAIL 9**  
S401 1" = 1'-0"



**DETAIL 10**  
S401 1" = 1'-0"

- NOTES TO STEEL DETAILER:**
1. WORK POINT OF BRACING CONNECTION DETAIL TO CONSIST OF C/L COL., C/L BEAM AND C/L BRACE.
  2. [85K] - INDICATES 85 KIP AXIAL FORCE (COMPRESSION AND/OR TENSION) THAT END CONNECTIONS OF BRACES ARE TO BE DESIGNED FOR, WHERE MULTIPLE BRACES OCCUR, WORST COMBINATION OF COMPRESSION / TENSION TO BE CONSIDERED.
  3. GENERAL NOTE 14 ON 1/S001 MUST BE COMPLIED WITH.
  4. CONNECTIONS TO COLUMNS MUST BE BOLTED, CONNECTIONS TO BEAMS MAY BE BOLTED OR WELDED. CONNECTIONS TO COMPLY WITH TYPICAL DETAILS ON S004.

**NOTE: UNLESS NOTED OTHERWISE:**  
1. PLATE & BRACE MAY FRAME INTO COLUMN FLANGES OR WEB PER ORIENTATION SHOWN ON PLANS.  
2. CONCRETE AND/OR METAL DECK NOT SHOWN FOR CLARITY.